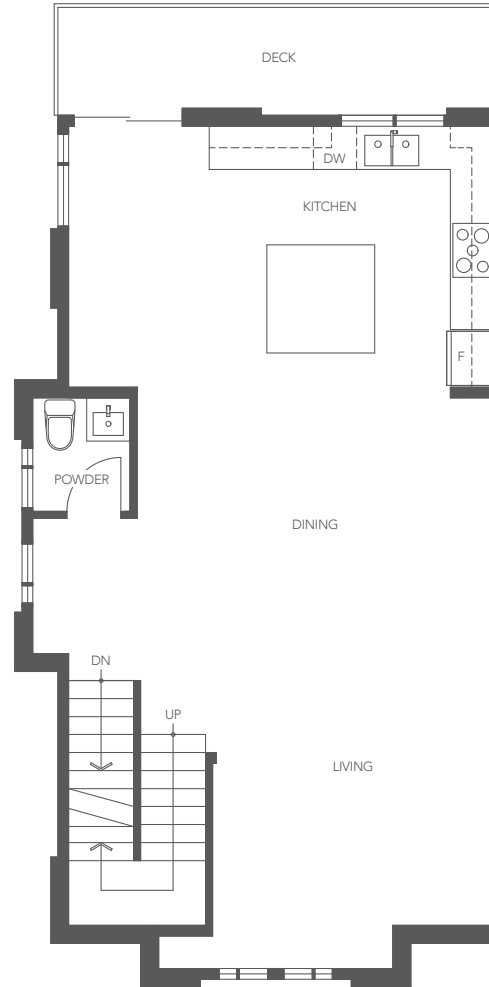
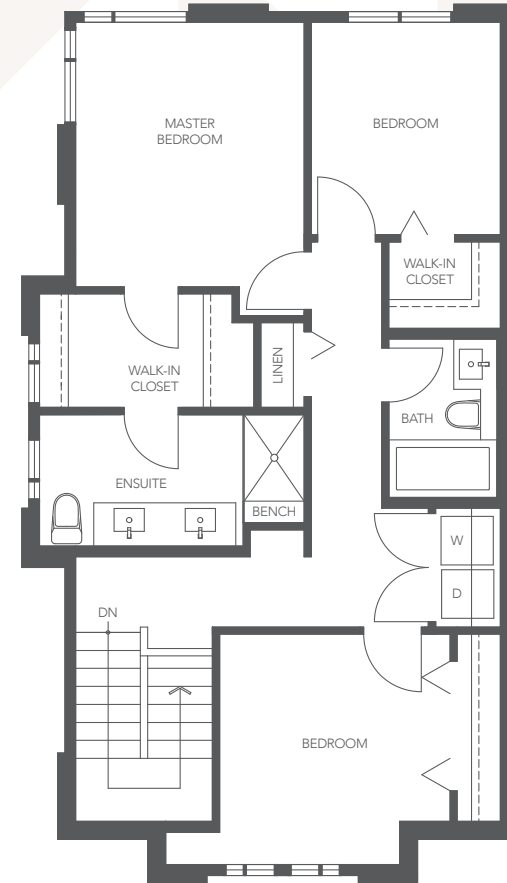


LOWER



MAIN



UPPER

# PLAN D1

UNION SERIES

3 BEDROOM + DEN  
3.5 BATHROOM  
APPROX. 1,900 SQ. FT.

THE DEVELOPER RESERVES THE RIGHT TO MAKE MODIFICATIONS OR SUBSTITUTIONS SHOULD THEY BE NECESSARY. ANY MEASUREMENTS PROVIDED ARE APPROXIMATE ONLY. THE QUALITY RESIDENCES AT TOWNSEND ARE BUILT BY POLYGON TOWNSEND HOMES LTD.

09/11/19