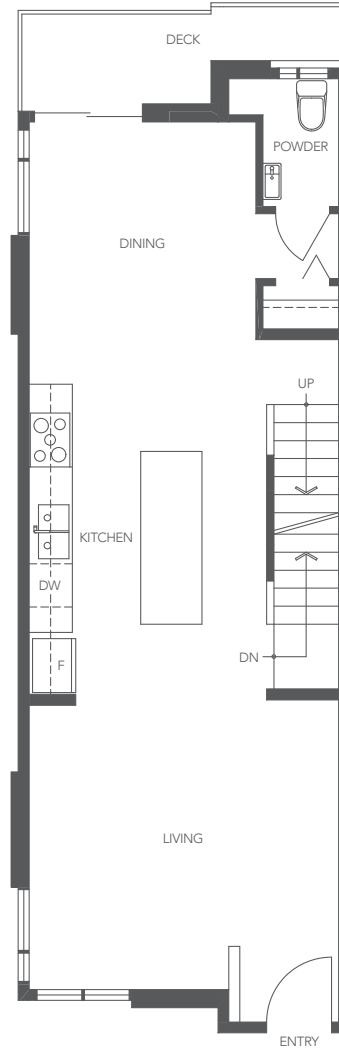
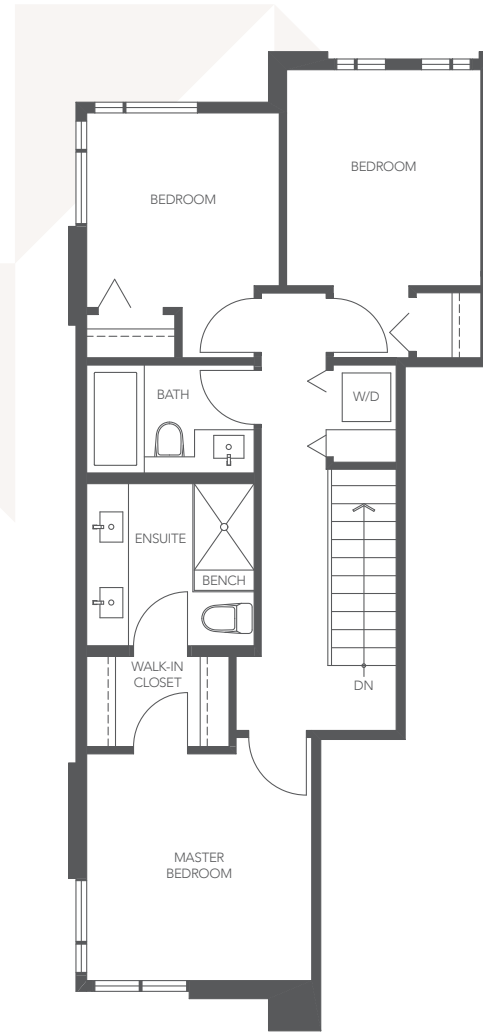


LOWER



MAIN



UPPER

PLAN A5

PANORAMA SERIES

3 BEDROOM
2.5 BATHROOM
APPROX. 1,300 SQ. FT.

THE DEVELOPER RESERVES THE RIGHT TO MAKE MODIFICATIONS OR SUBSTITUTIONS SHOULD THEY BE NECESSARY. ANY MEASUREMENTS PROVIDED ARE APPROXIMATE ONLY. THE QUALITY RESIDENCES AT TOWNSEND ARE BUILT BY POLYGON TOWNSEND HOMES LTD.

09/17/19