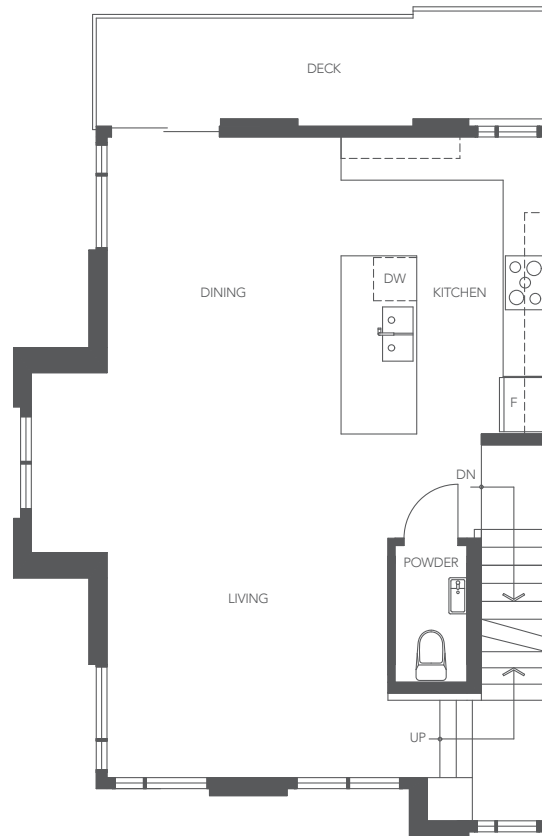
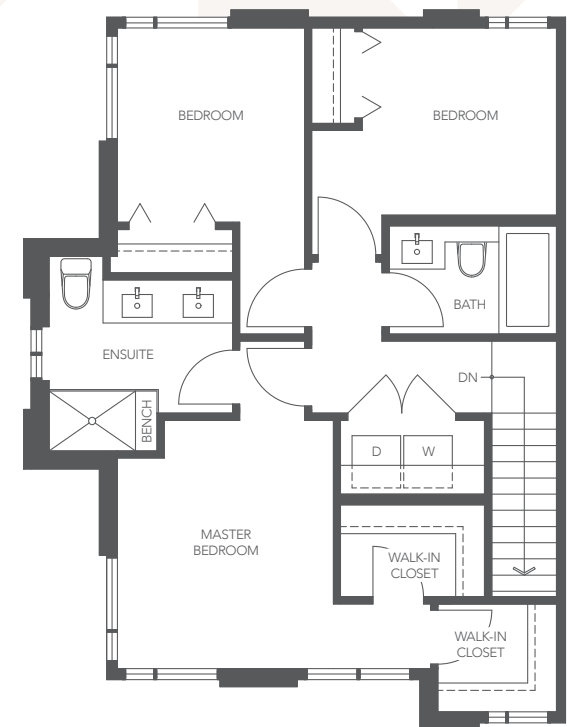


LOWER



MAIN



UPPER

PLAN B6

KINDRED SERIES

3 BEDROOM + DEN
2.5 BATHROOM
APPROX. 1,519 SQ. FT.

THE DEVELOPER RESERVES THE RIGHT TO MAKE MODIFICATIONS OR SUBSTITUTIONS SHOULD THEY BE NECESSARY. ANY MEASUREMENTS PROVIDED ARE APPROXIMATE ONLY. THE QUALITY RESIDENCES AT TOWNSEND ARE BUILT BY POLYGON TOWNSEND HOMES LTD.

11/26/19