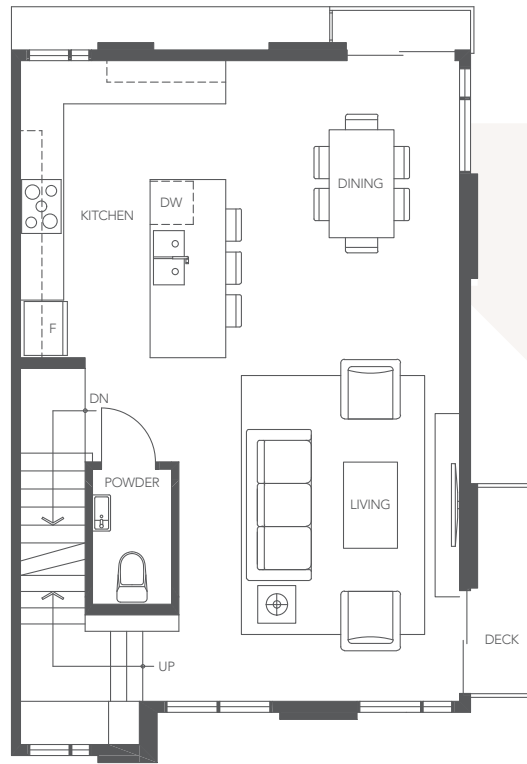
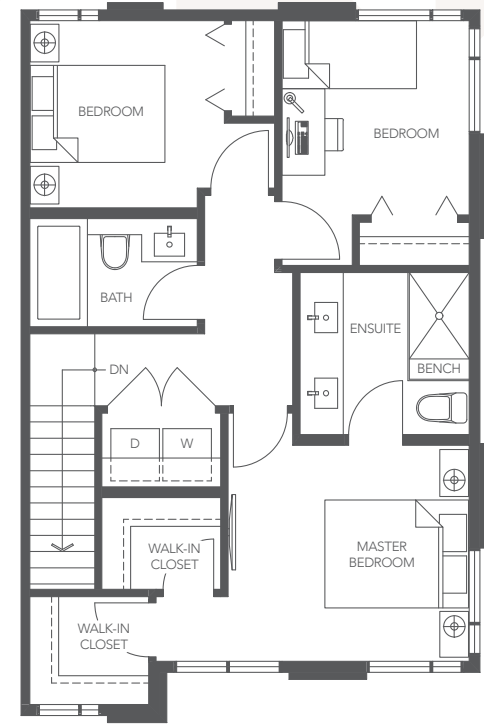


LOWER



MAIN



UPPER

PLAN B13

KINDRED SERIES

3 BEDROOM + DEN
2.5 BATHROOM
APPROX. 1,445 SQ. FT.

THE DEVELOPER RESERVES THE RIGHT TO MAKE MODIFICATIONS OR SUBSTITUTIONS SHOULD THEY BE NECESSARY. ANY MEASUREMENTS PROVIDED ARE APPROXIMATE ONLY. THE QUALITY RESIDENCES AT TOWNSEND ARE BUILT BY POLYGON TOWNSEND HOMES LTD.

11/18/19